

TAXING UNIT: 25

PART OF N.W. 1/4 OF SECTION 17, T.6N.,R.1W., S.L.B.&M

IN OGDEN CITY SCALE 1" = 100'

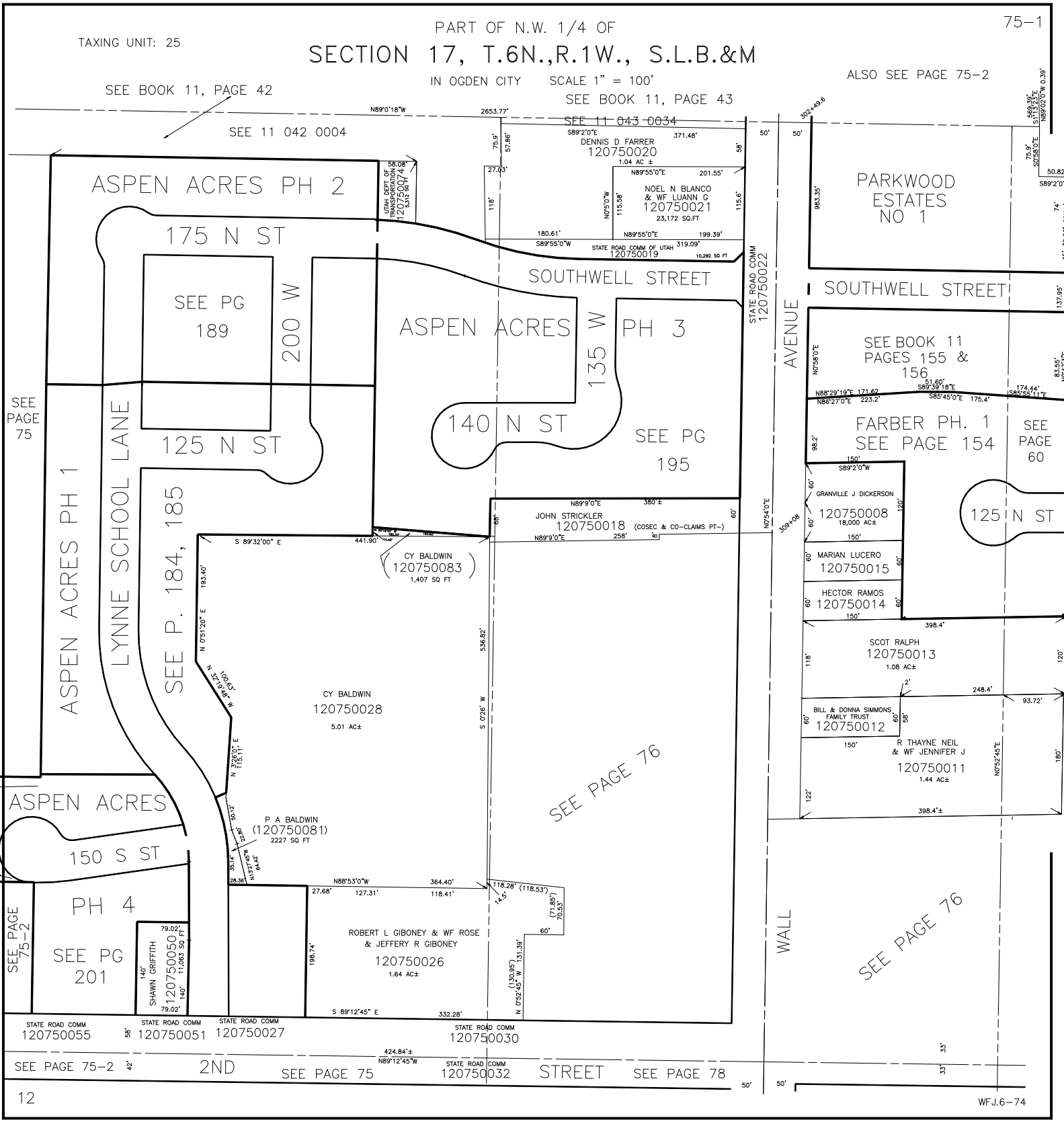
ALSO SEE PAGE 75-2

SEE BOOK 11, PAGE 42

SEE BOOK 11, PAGE 43

SEE 11 042 0004

SEE 11 043 0034



ASPEN ACRES PH 2

175 N ST

SEE PG 189

200 W

ASPEN ACRES PH 3

140 N ST

SEE PG 195

135 W

125 N ST

SEE P. 184, 185

ASPEN ACRES PH 1

LYNNE SCHOOL LANE

SEE PAGE 75

SEE PAGE 75-2

PH 4

SEE PG 201

150 S ST

CY BALDWIN 120750028 5.01 AC±

CY BALDWIN 120750083 1,407 SQ FT

P A BALDWIN 120750081 2227 SQ FT

ROBERT L GIBONEY & WF ROSE & JEFFERY R GIBONEY 120750026 1.64 AC±

JOHN STRICKLER 120750018 (COSEC & CO-CLAIMS PT-) 258'±

SEE PAGE 76

PARKWOOD ESTATES NO 1

SOWELL STREET

SEE BOOK 11 PAGES 155 & 156

FARBER PH. 1 SEE PAGE 154

SEE PAGE 60

GRANVILLE J DICKERSON 120750008 18,000 AC±

MARIAN LUCERO 120750015

HECTOR RAMOS 120750014

SCOT RALPH 120750013 1.08 AC±

BILL & DONNA SIMMONS, FAMILY TRUST 120750012

R THAYNE NEIL & WF JENNIFER J 120750011 1.44 AC±

WALL

SEE PAGE 76

STATE ROAD COMM 120750055

STATE ROAD COMM 120750051

STATE ROAD COMM 120750027

STATE ROAD COMM 120750030

SEE PAGE 75-2

2ND

SEE PAGE 75

STATE ROAD COMM 120750032

STREET

SEE PAGE 78